



Regional Economic Development for Eastern Idaho
(Covering Southeast and East Idaho)

**“WHAT’S UP IN EASTERN IDAHO!”
THIRD ANNUAL CONFERENCE**

**OCTOBER 21, 2022
9:00 a.m. to 4:00 p.m.**

“POWER OF PLACE”

- 9:00 A.M. WELCOME & OPENING REMARKS**
- Teresa McKnight, CEO of REDI
- 9:20 a.m. CURRENT ACTIVITIES AT THE OFFICE OF NUCLEAR ENERGY**
- Dr. Kathryn Huff, Assistant Secretary, Office of Nuclear Energy - US Department of Energy
- 9:50 a.m. BUILDING COMMUNITY THROUGH BUSINESS ENGAGEMENT**
- Theresa Sutter, General Manager - Curtiss-Wright, Idaho Falls
- 10:30 a.m. MORNING BREAK**

- 10:45 a.m. THE SECRET SAUCE TO BUSINESS RECRUITMENT & RETENTION**
- Alan Rindlisbacher, Retired Economic Development and Community Strategist
- 11:35 a.m. SPECIAL AWARD & RECOGNITION – “OUTSTANDING INNOVATOR & BUILDER OF DYNAMIC ECONOMIC ECOSYSTEMS”**
- Presented to Frank L. VanderSloot, CEO of Melaleuca
 - Presented by R. Scott Reese, Chair of REDI’s Board of Directors
- 12:00/noon BREAK FOR ATTENDEES TO PICK UP BOXED LUNCHES**
- 12:30 p.m. KEYNOTE: TECHNOLOGY DOESN’T INNOVATE. PEOPLE DO. HOW TO ENSURE THE CHANGE-AGENTS IN YOUR ORGANIZATION CAN GET THE JOB DONE.**
- Peter Newell, CEO of BMNT Inc.
- 1:30 p.m. LEADING IN TIMES OF DISRUPTION**
- Doug Sayer, CEO & Co-Founder of Premier Technology Inc.
 - Adam Montierth, Director of Operation - Ball Ventures
- 2:30 p.m. AFTERNOON BREAK**
- 2:45 p.m. THE ECONOMIC BENEFITS OF BUILDING A REGIONAL EVENTS CENTER IN IDAHO FALLS**
- Rob Spears, Executive Director - Idaho Falls Auditorium District
- 3:15 p.m. BRIDGING THE GAP BETWEEN STUDENTS AND THE BUSINESS COMMUNITY!**
- Kris Hammond, Director of Career & Employment Services - Brigham Young University-Idaho (BYU-)
- 3:50 p.m. CLOSING REMARKS & GRAND PRIZE DRAWING**
- R. Scott Reese, Chair of REDI’s Board of Directors
-

SPONSORS:

PLATINUM SPONSOR



**Idaho
Central[®]**
CREDIT UNION

GOLD SPONSORS



SILVER SPONSORS



PARTNER SPONSORS



ZIONS BANK®

THANK YOU! TO OUR SPONSORS!

SPEAKERS:



**KRIS
HAMMOND**

KRIS HAMMOND is the Director of Career & Employment Services at BYU-Idaho. In this role Kris oversees a team of professionals focused on helping BYU-Idaho students in two main areas: first, to become better prepared for professional employment and second, to provide opportunities for these students to connect with internship, job and career opportunities around the country. Kris and the Career Center team work closely with a network of hundreds of companies, organizations and individuals who recruit BYU-Idaho students at numerous on-campus and off-campus activities and events throughout the year. Prior to his time at BYU-Idaho Kris spent nearly ten years working in international sales, marketing and operations at Melaleuca Inc. During his time in various roles at Melaleuca, Kris traveled to and worked extensively in Malaysia, Singapore, China, Taiwan and many other international countries.

Kris grew up on a family farm in Eastern Idaho and has a great love for the area. Kris and his wife Kristy live outside of Rexburg, Idaho with their four children. Outside of his role at BYU-Idaho Kris is the varsity girls' softball coach at South Fremont High School and he enjoys hunting, fishing, hiking, being outdoors and watching his children participate in sports and their other activities.



**GUEST
SPEAKER:
DR. KATHRYN
HUFF**

DR. KATHRYN HUFF Dr. Kathryn Huff leads the Office of Nuclear Energy as the Assistant Secretary. Prior to her current role, she served as a Senior Advisor in the Office of the Secretary. Dr. Huff also led the office as the Principal Deputy Assistant Secretary for Nuclear Energy. Before joining the Department of Energy, she was an Assistant Professor in the Department of Nuclear, Plasma, and Radiological Engineering at the University of Illinois at Urbana-Champaign where she led the Advanced Reactors and Fuel Cycles Research Group. She was also a Blue Waters Assistant Professor with the National Center for Supercomputing Applications. She was previously a Postdoctoral Fellow in both the Nuclear Science and Security Consortium and the Berkeley Institute for Data Science at the University of California - Berkeley. She received her PhD in Nuclear Engineering from the University of Wisconsin-Madison in 2013 and her undergraduate degree in Physics from the University of Chicago. Her research focused on modeling and simulation of advanced nuclear reactors and fuel cycles.

She is an active member of the American Nuclear Society, a past Chair of the Nuclear Nonproliferation and Policy Division as well as the Fuel Cycle and Waste Management Division, and recipient of both the Young Member Excellence and Mary Jane Oestmann Professional Women's Achievement awards. Through leadership within Software Carpentry, SciPy, the Hacker Within, and the Journal of Open Source Software she also advocates for best practices in open, reproducible scientific computing.



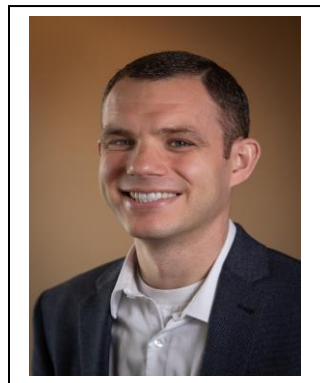
SPEAKERS:



**TERESA
MCKNIGHT**

TERESA MCKNIGHT is the CEO of REDI. McKnight is an entrepreneurial driven executive with more than 30-years' experience working with Innovation Districts, technology commercialization, business incubation, government relations, business and economic development. She has a strong background building public-private partnerships, consulting on strategic economic development and philanthropy initiatives, and moving new ideas to market. She is passionate about building long-lasting relationships between business, industry, university, government, and community.

Prior to joining REDI, Ms. McKnight served as the Director of the State of Utah Incubation Enterprise and Technology Outreach Program. She led the development of the first statewide incubation program in Utah and negotiated the first-of-its-kind partnership Agreement between the State of Utah and the United States Air force. Prior to working for the State of Utah, Ms. McKnight led the development of several large Innovation Districts in three different states. Ms. McKnight has received several honors and awards, including Excellence in Rural Economic Development Award from the Department of Commerce in Washington DC and the Chamber of Commerce Achievement Award in Business. She earned a bachelor's in business administration from Utah State University and an MBA from Utah Valley University.



**ADAM
MONTIERTH**

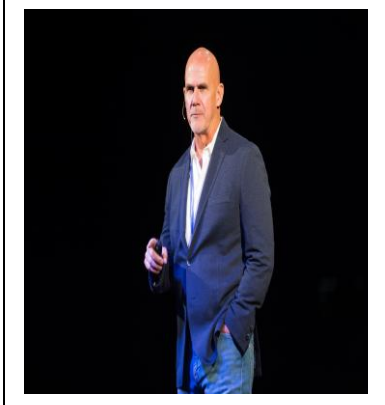
ADAM MONTIERTH, Adam Montierth was born and raised in eastern Washington and moved to Idaho in 2003 to attend BYU-Idaho. After serving a two-year mission for The Church of Jesus Christ of Latter-Day Saints in Ecuador, he returned to BYU-Idaho where he graduated with a bachelor's degree in Business Management, with an emphasis in Marketing in 2009. While attending school he began an 11-year tenure with Rexburg Motor Sports where he worked as the Internet Sales Manager and later managed the company's e-commerce platform, GearHead.com.

He joined the Ball Ventures corporate office in 2017 and was named the Director of Operations in 2020. When the COVID-19 pandemic began he played a key part in executing Ball Ventures' work from home strategy. In addition to being deeply involved in corporate operations, Adam also oversees the company's student housing portfolio and assists other company owned operating businesses.

Adam received his MBA from Utah State University in 2019.



SPEAKERS:



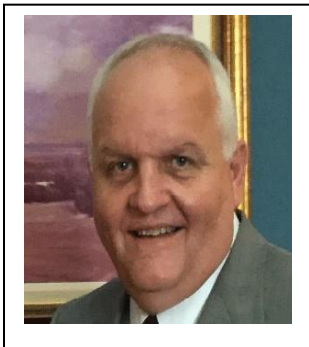
**KEYNOTE SPEAKER:
PETE
NEWELL**

PETE NEWELL Pete Newell is a nationally recognized innovation expert whose work is transforming how the government and other large organizations compete and drive growth.

A retired Army Colonel and former director of the Army's Rapid Equipping Force, he is the CEO of BMNT Inc., an internationally recognized innovation consultancy and early-stage enterprise accelerator that helps solve some of the hardest real-world problems in national security, state and local governments, and beyond.

BMNT uses a framework, called H4X®, to drive innovation at speed. H4X® is an adaptation of the problem curation techniques honed on the battlefields of Iraq and Afghanistan combined with the best practices employed by successful Silicon Valley startups. The result is a disciplined, evidence-based, data-driven process for connecting innovation activities into an accountable system that delivers solutions and overcome obstacles to innovation.

Together with Lean Startup founder Steve Blank and Joe Felter, the retired Army Colonel and former US Deputy Assistant Secretary of Defense for South and Southeast Asia; Pete is also founder and co-author of Hacking for Defense (H4D)®, an academic program taught at 50+ universities in the U.S., as the UK and Australia, that has created a national security innovation pipeline as it solves critical national security problems at startup speed.



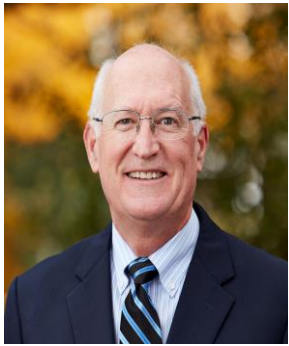
**SCOTT
REESE**

R. SCOTT REESE is the Emergency Management Director for Bingham County and Chair of REDI's Executive Board of Directors. He is a graduate of Blackfoot High and attended Idaho State University studying political science. Scott was elected as Blackfoot's youngest mayor, at age 28, and was the first to serve three consecutive terms. Scott worked at the family business until he became the first full time mayor.

Scott serves as Chairman of the Blackfoot Urban Renewal Agency and served as Chairman of the Bingham Chamber of Commerce Board of Directors, served as the Bingham County Republican Party Chairman, was on the Board of Directors for the Association of Idaho Cities, and served on the Blackfoot School Board. He also served six years as Chairman of the Idaho Employer Support of the Guard and Reserve.



SPEAKERS:



**ALAN
RINDLISBACHER**

ALAN RINDLISBACHER Alan Rindlisbacher is a semi-retired business leader and economic development professional who resides in Salt Lake County, Utah.

Rindlisbacher holds a BS degree, Business Administration and Economics, from Utah State University. His forty-year career includes roles as Program Specialist, USU Conference and Institute Division; Economic Development Director, Salt Lake Chamber; Vice President Business Attraction, EDCUtah; Director of National Business Development, State of Utah Division of Business and Economic Development; Director of Corporate Communications and Marketing, Layton Construction Company; Director of Community Strategy, EDCUtah.

He is a long-time champion of development in the state of Utah, both in the public and private sectors. He has served on numerous boards and commissions including USU College of Business Dean's Advisory Council, NAIOP Commercial Real Estate Development Association Utah Chapter Board and President, Visit Salt Lake Board and President; Utah Alliance for Economic Development Board; South Valley Chamber Board; Salt Lake County Sheriff's Office Chaplain; Salt Lake Unified Fire Authority Merit Commission.

Rindlisbacher was at Layton Construction Company for most of his career—22 years—helping the company grow from a regional commercial constructor to a highly-ranked national company with 11 regional offices, including Boise, with revenues nearing two billion dollars annually.

Upon retirement from Layton Construction, he returned to EDCUtah with a primary role to manage the Development Ready Communities program, working with communities statewide to build the state's economy through training, communication and collaboration.

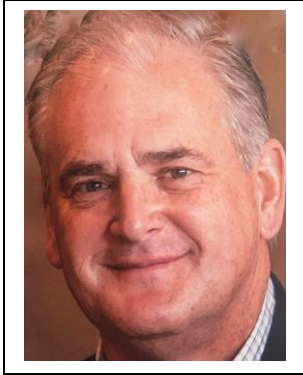


**DOUG
SAYER**

DOUG SAYER has Douglas A. Sayer- Chief Business Officer and Co-Founder of Premier Technology, Inc. Doug Sayer began his career working as mechanic in the Food Processing Industry, which is where he learned the valuable trade of welding along with the basic concepts of the food processing industry. After several years Doug left the manufacturing industry and started his own Outfitting/Guiding business, this was his first adventure as a businessman. Although the business never became a large financial success it taught Doug several important life lessons, most importantly it introduced him to several influential mentors. After the outfitting business Doug found himself back in his original industry of metal manufacturing, and in 1996 he co-founded Premier Technology, Inc. The company was established with one pick-up truck, a welder, and two employees. Over the past 26 years the company has grown immensely under Doug's leadership. The company moved from Pocatello to Blackfoot in 2006 and has grown to over 300 employees. Premier Technology is a custom design, engineering and manufacturing facility. It is vertically integrated and has unlimited capabilities. Customers include the Department of Energy, the Department of Defense, Commercial Food Industry, Commercial Nuclear Industry and Mining/Petrochemical Industry.

In 2009 Doug was named Idaho State University's Alpha Kappa Psi's Business Leader of the Year, and the Utah-Idaho Region Ernst and Young Entrepreneur of the Year. Premier was also recognized as one of Idaho's Top 75 private companies in 2008, and 2010 through 2022. Premier was also awarded the Better Business Bureau "Integrity Counts Award" in 2011. Doug is active in Idaho politics and education, serving as a board member of a local technical college and as an executive board member at Idaho State University, and ISU's Bengal Pharmacy. Doug has been appointed by the Governor to serve on several state-based councils including Idaho Science and Technology Council, Workforce Development Council, Chairman Idaho Innovation Council and finally as the Chairman of the IGEM council. He is currently serving on the board for The Idaho Governor's Cup and on the Higher Education Research Council. Doug has Five US and international patents in the Nuclear and Mining industries.

SPEAKERS:



ROB SPEAR

ROB SPEARS Rob Spear was appointed as the Executive Director of the Idaho Auditorium District in April of 2019.

Spear is a proven administrator whose experience cuts across both the private and public sectors. With over 30 years of experience, Spear is a proven administrator who has a track record of successful fundraising, strategic planning, and facility development. Spear earned his doctorate degree from the University of Idaho, MBA from the University of Montana, and undergraduate degree in business from the College of Great Falls (now the University of Providence).

Spear and his wife Sandy have one daughter, Morgan, who resides in Austin Texas,



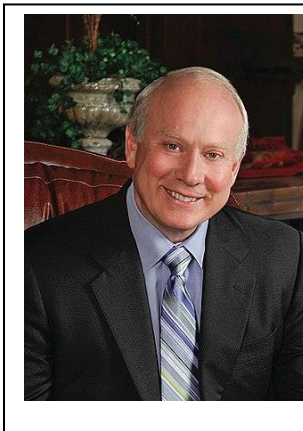
THERESA SUTTER

THERESA SUTTER relocated from Tampa, Florida to Idaho Falls in 2020 to take on the General Manager role at Curtiss-Wright.

Sutter has more than 30 years of experience in the power industry, and currently manages Curtiss-Wright's effort to provide technology-based equipment and services for the commercial nuclear power industry.

Previously, Theresa worked as a Senior Licensing and Compliance Engineer at Bechtel Power Corporation.

Theresa holds a bachelor's degree in nuclear engineering from the University of Florida.



FRANK VANDERSLOOT

FRANK VANDERSLOOT is Executive Chairman of the Board of Directors of Melaleuca, Inc. in Idaho Falls, Idaho. Since the company began in September 1985, VanderSloot has directed its growth into an international company that generates more than \$2 billion in annual revenue through a sales force reaching hundreds of thousands of households across North America, Taiwan, Japan, Korea, China, Malaysia, Singapore, Australia, Hong Kong, New Zealand, the Netherlands, Ireland, Germany, Austria, Poland and the United Kingdom. He has directed the development of the company's 400 nutritional, pharmaceutical, personal care and household cleaning products.

The U.S. Chamber of Commerce presented Melaleuca with the BlueChip Enterprise Award, recognizing companies that have overcome great adversity on their way to success. VanderSloot has been named Entrepreneur of the Year by Ernst & Young, CNN and *USA Today*. He received the Horatio Alger Award and was inducted as a lifetime member into the Horatio Alger Association of Distinguished Americans. VanderSloot has served on the U.S. Chamber of Commerce's Board of Directors for 25 years, and he currently sits on the Chamber's Executive Committee. Prior to Melaleuca, VanderSloot held key management positions with two Fortune 500 companies. He served as a Regional Vice President for Automated Data Processing (ADP) and later became Vice President for Cox Communications.

Frank earned a Bachelor of Science in Business Management from Brigham Young University in Provo, Utah. In addition to his responsibilities at Melaleuca, Frank owns several large cattle ranches, including one of the nation's largest and most elite registered Angus herds.



Regional Economic Development for Eastern Idaho
(Covering Southeast and East Idaho)

***THANK YOU! FOR ATTENDING THIS YEARS
“WHAT’S UP IN EASTERN IDAHO!”
THIRD ANNUAL CONFERENCE.***

***IF YOU ARE INTERESTED IN GETTING INVOLVED
WITH REGIONAL ECONOMIC DEVELOPMENT,
AND HAVING A VOICE AT THE TABLE,
PLEASE CONTACT TERESA MCKNIGHT,
CEO OF REDI,
tmcknight@rediconnects.org
OR BY CALLING REDI’S MAIN OFFICE
AT (208) 522-2014.***

**PLEASE MARK YOUR CALENDAR NOW FOR REDI’S
“WHAT’S UP IN EASTERN IDAHO!”
FOURTH ANNUAL CONFERENCE
TO BE HELD ON
FRIDAY, OCTOBER 20th, 2023.**